

Check the product label for actual catalog number, lot and expiry date.

CozyHi™ Prestained Protein Ladder

CAT.#	SIZE	COMPONENTS	COMPONENT COMPOSITION
PRL0202	200 appl.	2 x 0.5 ml - CozyHi™ Prestained Protein Ladder	Ready to load ladder contains highly purified prestained proteins, supplied denatured in 20 mM Tris-Phosphate (pH 7.5 at 25°C), 2% SDS, 0.2 mM DTT, 3.6 M Urea, 15% (v/v) glycerol).

APPLICATIONS

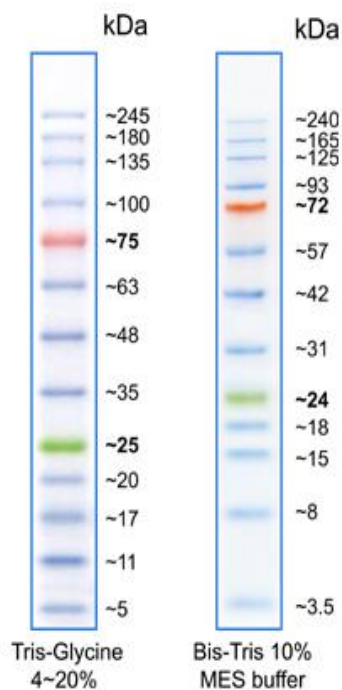
- Approximate protein molecular weight determination on denaturing gels and Western Blots
- Monitoring of electrophoresis process and transfer efficiency

BENEFITS

- Room-temperature-stable ladders are always ready to be used
- Sharp bands, bright colors

CozyHi™ Prestained Protein Ladder

3.5-245 kDa Range
 25 & 75 kDa References
 13 Bands
 0.2-0.4 µg/µl concentration of each protein
 Ready-to-use



PROTOCOL

Load: 3- 5 µl/ gel well for electrophoresis
 Load: 2- 3 µl/ gel well for Western transfers

STORE

Room temp., short term (2 weeks)
 +4°C, 3 months
 -20°C, 12 months

The storage recommendations are just guidelines, the expiry date shall be followed.

Note:

The picture shows just guidelines for approximate protein MW estimation. The apparent MW of each protein was determined by calibrating it against unstained protein of same size. For more precise sizing, such calibration shall be done exactly at conditions used.

IN VITRO RESEARCH USE ONLY

ORDERING
 T: +48 535 774 222
 orders@eprosience.com

TECHNICAL SUPPORT
 T: +48 535 774 222
 eproscience@eprosience.com