

High Throughput for Your Cell-Based Assays

ibidi Multiwell Plates

- ✓ High-resolution cell microscopy on a tissue culture-treated surface
- ✓ Brilliant fluorescence imaging without autofluorescence
- ✓ Ready for HTS and robotics: compliant with ANSI/SLAS (SBS)



Order your **free sample** now
and test the ibidi μ -Plates
with your experiments.



μ -Plate 24 Well Black

Wells with black walls and a flat, clear bottom for brilliant images in high throughput cell microscopy.



μ -Plate 96 Well Black

Square wells, black walls, and a flat and clear bottom for high throughput cell-based assays.



μ -Plate 384 Well Clear

Wells with clear walls and a flat, clear bottom for high-throughput assays in the automated lab.

High Throughput for Your Cell-Based Assays

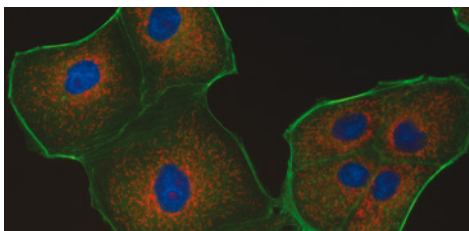
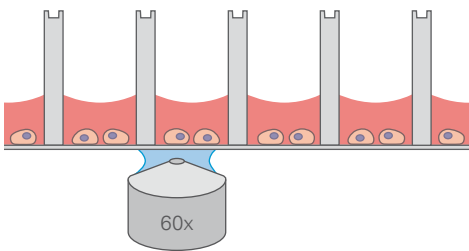
ibidi Multiwell Plates

μ-Plate 24 Well Black | μ-Plate 96 Well Black | μ-Plate 384 Well Clear

- μ-Plates with a flat ibidi Polymer Coverslip bottom for high-resolution live cell imaging
- Without autofluorescence or well-to-well crosstalk for excellent immunofluorescence microscopy

Ideal for:

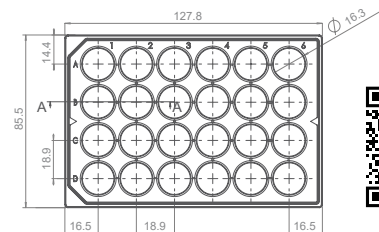
- Live cell imaging using lab automatization
- Fluorescence microscopy
- Compound screenings (toxicology)
- Large-scale transfection assays
- Wound healing assays using the μ-Plate 24 Well in combination with the ibidi Culture-Inserts



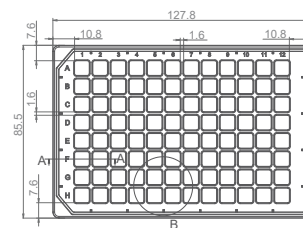
Immunofluorescence staining of MDCK cells.

Find detailed technical specifications in the instructions:

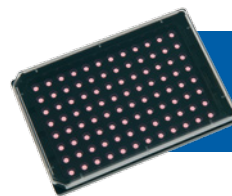
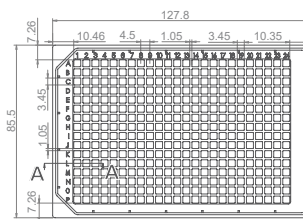
μ-Plate 24 Well Black



μ-Plate 96 Well Black



μ-Plate 384 Well Clear



Interested in high-throughput angiogenesis assays? Test the μ-Plate Angiogenesis 96 Well

Technical Details:

μ-Plate	24 Well Black	96 Well Black	384 Well Clear
Length / width	127.8 / 85.8 mm	127.8 / 85.5 mm	127.8 / 85.5 mm
Height with / without lid	22.5 / 20.1 mm	17.2 / 15.0 mm	17.2 / 15.0 mm
Well-to-well distance	18.9 mm	9.0 mm	4.5 mm
Single well dimensions	Ø 16.3 mm	7.4 x 7.4 mm ²	3.45 x 3.45 mm ²
Volume per well	1 ml	300 μl	50 μl
Growth area per well	1.90 cm ²	0.56 cm ²	0.11 cm ²
Bottom:	ibidi Polymer Coverslip		

Ordering Information:

Cat.No.	Description
82406	μ-Plate 24 Well Black ibiTreat: #1.5 polymer coverslip, tissue culture treated, sterilized
82401	μ-Plate 24 Well Black Uncoated: #1.5 polymer coverslip, hydrophobic, sterilized
89626	μ-Plate 96 Well Black ibiTreat: #1.5 polymer coverslip, tissue culture treated, sterilized
89621	μ-Plate 96 Well Black Uncoated: #1.5 polymer coverslip, hydrophobic, sterilized
88416	μ-Plate 384 Well Clear ibiTreat: #1.5 polymer coverslip, tissue culture treated, sterilized
88411	μ-Plate 384 Well Clear Uncoated: #1.5 polymer coverslip, hydrophobic, sterilized

More details and technical drawings at ibidi.com.