

Check the product label for actual catalog number, lot and expiry date.

CozyXL™ Prestained Protein Ladder

CAT.#	SIZE	COMPONENTS	COMPONENT COMPOSITION
PRL0302	200 appl.	2 x 0.5 ml - CozyXL™ Prestained Protein Ladder	Ready to load ladder. It contains highly purified prestained proteins, supplied denatured in 20 mM Tris-Phosphate (pH 7.5 at 25°C), 2% SDS, 0.2 mM DTT, 3.6 M Urea, 15% (v/v) glycerol).

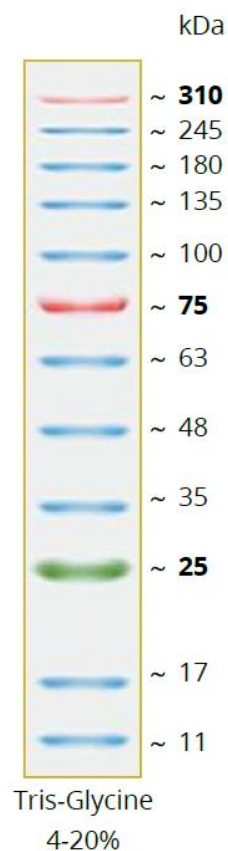
APPLICATIONS

- Approximate protein molecular weight determination on denaturing gels and Western Blots
- Monitoring of electrophoresis process and transfer efficiency

BENEFITS

- Very broad range protein ladder with a 310 kDa band
- Room-temperature-stable ladders, always ready to be used
- Sharp bands, bright colors

CozyXL™ Prestained Protein Ladder



11 - 310 kDa Range
25 (green), 75 (red) and 310 (red) kDa references
12 Bands
0.1-0.4 µg/µl concentration of each protein
Ready-to-use

PROTOCOL

Do not heat, just thaw (if needed) and mix.
Load: 3- 5 µl/ gel well for electrophoresis
Load: 3- 5 µl/ gel well for Western transfers
For Western transfer, use 100 V, 90 minutes. To see high MW bands better, perform slower overnight transfer.
Transfer Buffer: 25 mM Tris, 192 mM glycine, 20% methanol.

STORE

Room temp., short term (2 weeks)
+4°C, 3 months
-20°C, 12 months
Storage recommendations are just guidelines, the expiry date shall be followed.

Note:

The picture shows just guidelines for approximate protein MW estimation. The apparent MW of each protein was determined by calibrating it against unstained protein of same size. For more precise sizing, such calibration shall be done exactly at conditions used.

IN VITRO RESEARCH USE ONLY

ORDERING
T: +48 535 774 222
orders@eprosience.com

TECHNICAL SUPPORT
T: +48 535 774 222
orders@eprosience.com